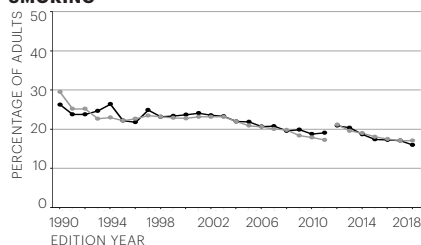


# Wisconsin

	Rating	2018 Value	2018 Rank	No. 1 State	
<b>Behaviors</b>					
Drug Deaths (deaths per 100,000 population)	+++	16.4	24	6.8	
Excessive Drinking (% of adults)	+	24.2	50	12.2	
High School Graduation (% of students)	+++++	88.2	9	91.3	
Obesity (% of adults)	+++	32.0	30	22.6	
Physical Inactivity (% of adults)	+++++	22.4	8	19.2	
Smoking (% of adults)	++++	16.0	20	8.9	
<b>Behaviors Total*</b>	<b>++++</b>	<b>0.034</b>	<b>20</b>	<b>0.301</b>	
<b>Community &amp; Environment</b>					
Air Pollution (micrograms of fine particles per cubic meter)	++++	6.8	12	4.5	
Children in Poverty (% of children)	++++	14.5	18	10.3	
Infectious Disease (mean z score of chlamydia, pertussis and <i>Salmonella</i> )*	+	0.517	43	-1.017	
Infectious Disease	Chlamydia (cases per 100,000 population)	+++	466.0	22	260.6
	Pertussis (cases per 100,000 population)	+	25.0	49	0.2
	<i>Salmonella</i> (cases per 100,000 population)	+++	15.6	26	6.8
Occupational Fatalities (deaths per 100,000 workers)	++++	4.3	17	2.5	
Violent Crime (offenses per 100,000 population)	+++	32.0	22	121	
<b>Community &amp; Environment Total*</b>	<b>++++</b>	<b>0.100</b>	<b>20</b>	<b>0.305</b>	
<b>Policy</b>					
Immunizations—Adolescents (mean z score of HPV, meningococcal and Tdap)*	+++	0.197	21	1.518	
Immunizations—Adolescents	HPV Females (% of females aged 13 to 17 years)	+++	56.0	21	76.8
	HPV Males (% of males aged 13 to 17 years)	++++	48.8	18	78.4
	Meningococcal (% of adolescents aged 13 to 17 years)	+++	83.8	28	95.3
	Tdap (% of adolescents aged 13 to 17 years)	+++	90.3	22	96.2
Immunizations—Children (% of children aged 19 to 35 months)	++	69.2	36	82.1	
Public Health Funding (dollars per person)	+	\$52	47	\$281	
Uninsured (% of population)	+++++	5.4	10	2.7	
<b>Policy Total*</b>	<b>+++</b>	<b>0.034</b>	<b>21</b>	<b>0.201</b>	
<b>Clinical Care</b>					
Dentists (number per 100,000 population)	+++	58.2	21	82.7	
Low Birthweight (% of live births)	++++	7.4	17	5.9	
Mental Health Providers (number per 100,000 population)	++	191.1	34	590.9	
Preventable Hospitalizations (discharges per 1,000 Medicare enrollees)	++++	45.0	17	23.3	
Primary Care Physicians (number per 100,000 population)	++++	150.1	20	264.5	
<b>Clinical Care Total*</b>	<b>+++</b>	<b>0.007</b>	<b>25</b>	<b>0.185</b>	
<b>All Determinants*</b>	<b>+++</b>	<b>0.174</b>	<b>23</b>	<b>0.718</b>	
<b>Outcomes</b>					
Cancer Deaths (deaths per 100,000 population)	+++	191.1	25	150.4	
Cardiovascular Deaths (deaths per 100,000 population)	+++	238.7	23	190.3	
Diabetes (% of adults)	++++	9.1	12	7.1	
Disparity in Health Status (% difference by high school education)	+	31.3	41	13.1	
Frequent Mental Distress (% of adults)	++++	11.6	17	9.2	
Frequent Physical Distress (% of adults)	+++	11.9	23	9.2	
Infant Mortality (deaths per 1,000 live births)	+++	6.0	24	3.9	
Premature Death (years lost before age 75 per 100,000 population)	++++	6,821	17	5,653	
<b>All Outcomes*</b>	<b>+++</b>	<b>0.045</b>	<b>22</b>	<b>0.283</b>	
<b>OVERALL*</b>	<b>+++</b>	<b>0.220</b>	<b>23</b>	<b>0.882</b>	

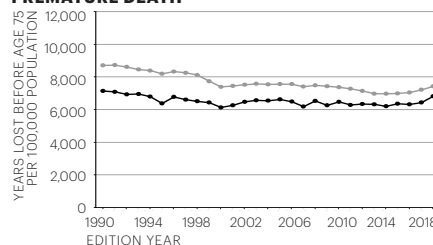
\* Value indicates z score. Negative scores are below U.S. value; positive scores are above U.S. value. For complete definitions of measures including data sources and years, see Table 5.

## SMOKING



State — Nation The 2012–2018 data in the smoking graph is not directly comparable with prior years.

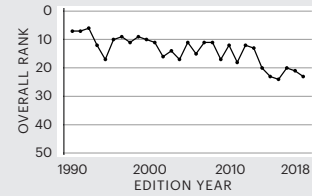
## PREMATURE DEATH



**OVERALL RANK:**  
**23**



Change: ▼ 2  
Determinants Rank: **23**  
Outcomes Rank: **22**



### Strengths:

- Low levels of air pollution
- High percentage of high school graduation
- Low percentage of uninsured population

### Challenges:

- High prevalence of excessive drinking
- High incidence of pertussis
- Low per capita public health funding

### Highlights:

- In the past six years, obesity increased 16% from 27.7% to 32.0% of adults
- In the past three years, air pollution decreased 25% from 9.1 to 6.8 micrograms of fine particles per cubic meter
- In the past three years, chlamydia increased 13% from 411.6 to 466.0 cases per 100,000 population
- In the past year, HPV immunization among males aged 13 to 17 increased 29% from 37.8% to 48.8%
- In the past three years, children in poverty decreased 21% from 18.4% to 14.5% of children aged 0 to 17
- In the past year, premature death increased 6% from 6,437 to 6,821 years lost before age 75 per 100,000 population

### Ranking:

Wisconsin is 23rd this year; it was 21st in 2017. The state ranks 10th for senior health and 15th for the health of women and children.

### State Health Department Website:

[www.dhs.wisconsin.gov](http://www.dhs.wisconsin.gov)